

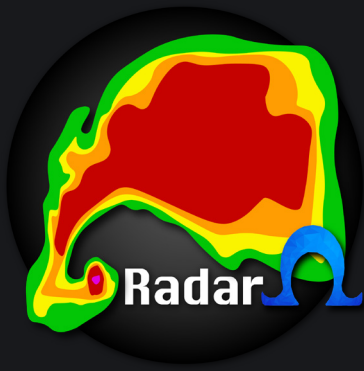
# The Official RadarOmega



## User Guide

*Updated May 29, 2020*

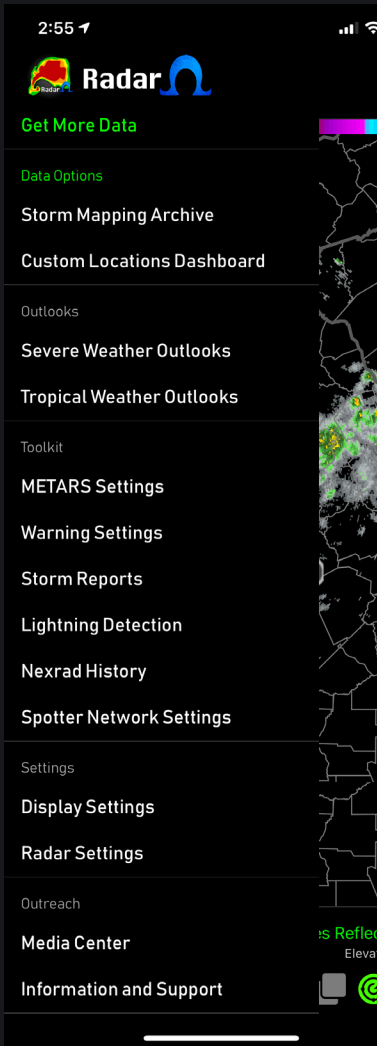
Version 3.2  
"The Mapbox Update"



# Table of Contents

<u>Side Menu</u>	Pages 3 - 10
<u>Top Menu</u>	Page 11
<u>Bottom Menu</u>	Page 12
<u>Subscriptions</u>	Pages 13 - 14
<u>Support/Thank you!</u>	Page 15

# Side Menu

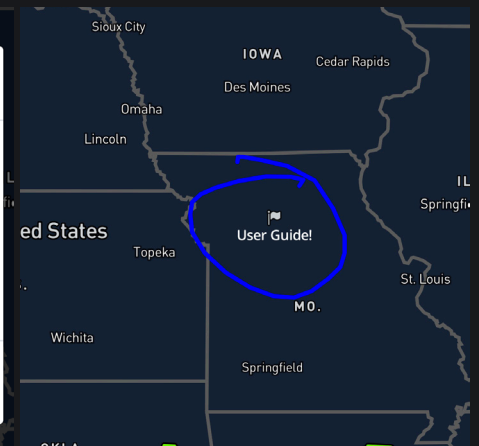
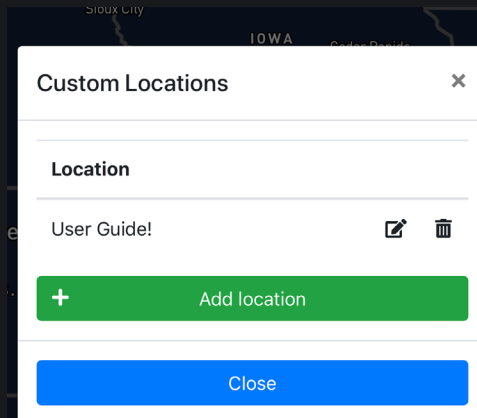
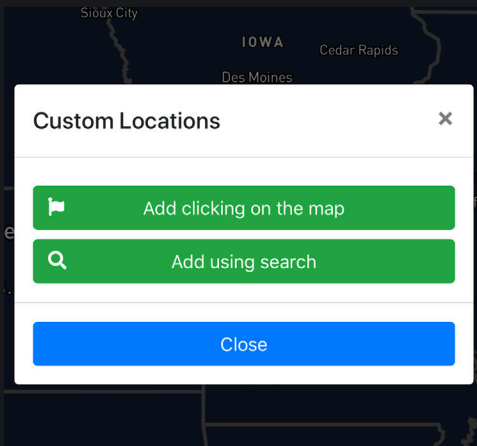


Welcome to the side menu! You can access this within your app by selecting the three bars.

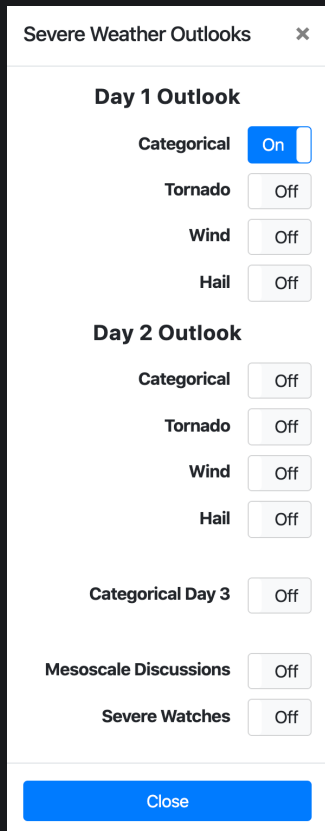
The first option you see is "**Get More Data**". This is where you will access subscription services.

**Storm Mapping Archive** is where you can access past severe weather events and the reports.

**Custom Location Dashboard** allows you to pin locations of your choosing to the map! Simply just select "Add Location", then either click on the map or type in a location, then name it! Done!



# Severe Weather Outlooks



The screenshot shows a settings panel titled "Severe Weather Outlooks" with a close button (X) in the top right corner. It is divided into three sections: "Day 1 Outlook", "Day 2 Outlook", and "Category Day 3". Each section contains four toggle switches for "Categorical", "Tornado", "Wind", and "Hail". In the "Day 1 Outlook" section, "Categorical" is turned "On" (blue), while "Tornado", "Wind", and "Hail" are turned "Off" (grey). In the "Day 2 Outlook" section, all four toggles are turned "Off". In the "Category Day 3" section, the "Categorical Day 3" toggle is turned "Off". Below these sections are two more toggles: "Mesoscale Discussions" and "Severe Watches", both turned "Off". At the bottom of the panel is a blue "Close" button.

Section	Categorical	Tornado	Wind	Hail
Day 1 Outlook	On	Off	Off	Off
Day 2 Outlook	Off	Off	Off	Off
Category Day 3	Off			
Mesoscale Discussions	Off			
Severe Watches	Off			

Selecting Severe Weather Outlooks will show you the Storm Prediction Centers Day 1 and Day 2 Categorical, Tornado, Wind, and Hail risk.

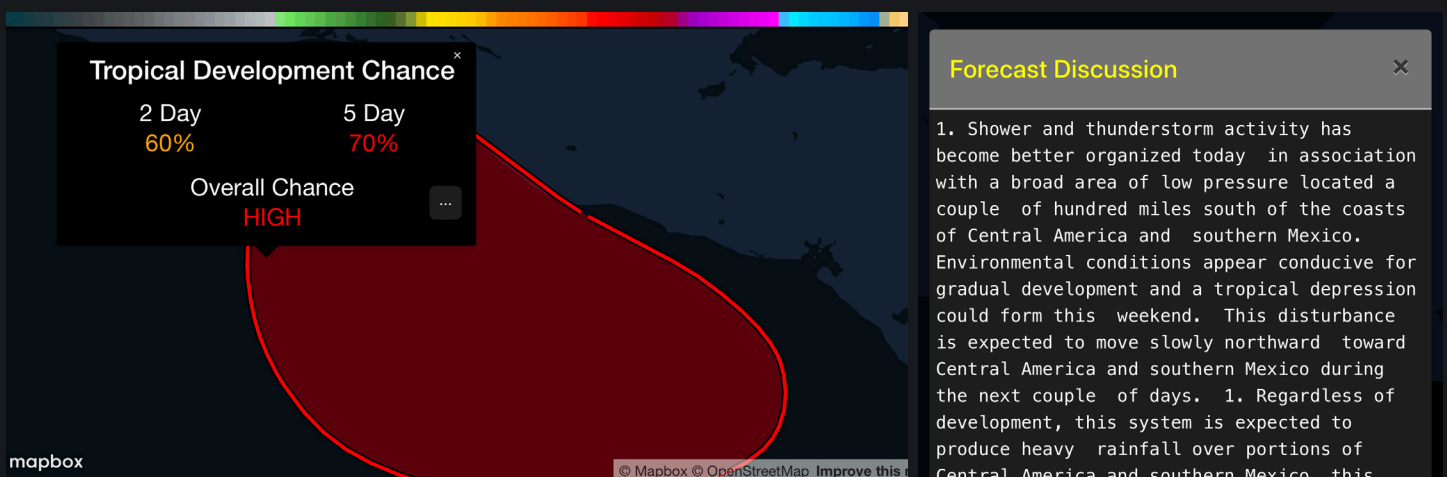
You can also access the SPC Categorical Day 3 outlook.

In addition to that, we have now added SPC Mesoscale Discussions as well as Severe Watches. Severe watches include Severe Thunderstorm Watch, as well as Tornado Watch.

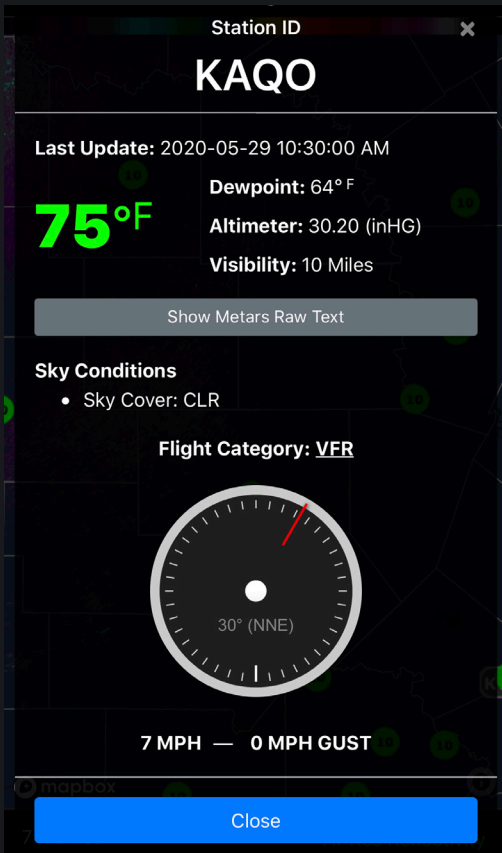
# Tropical Weather Outlook

Here's where you can find all of the tropical information we have to offer. This includes outlook information, past tracks & intensity of an active tropical storm, projected tracks, and wind probabilities.

This will also be where you'll find Hurricane Hunter information for certain flights they take, as well as spaghetti model information.



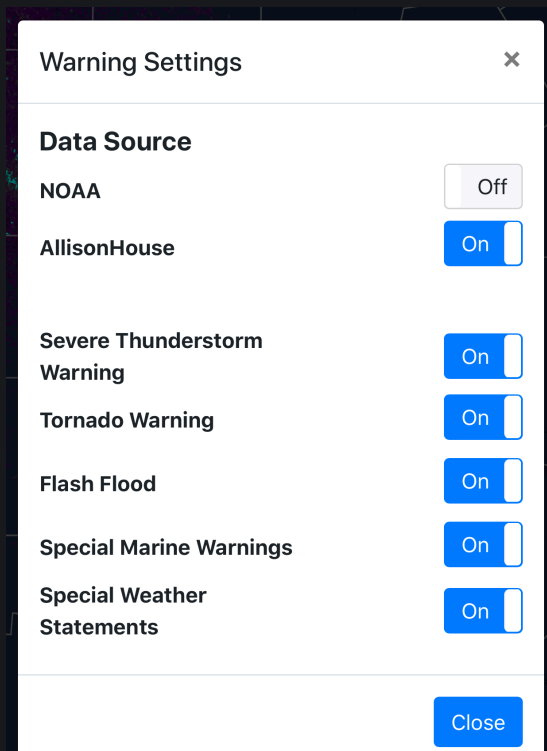
## METAR Settings



Here you can turn on and off METARs. Only one type can be on at a time. Options are Temperature, Dew-point, Wind direction, wind speed, and visibility.

If you have one of these settings on, you can click on one of the METARs. When you do that, it'll show you all of the information for that specific station. This includes the raw METAR text.

## Warning Settings



This is where you can decide which warnings you would like to see. Typically, we keep all of the warnings on at all times, but the option to turn individual ones off or on is really nice when there is a severe weather event with many tornado warnings and severe thunderstorm warnings.

You can also switch which source you would like to get your warning data from, either NOAA or AllisonHouse.

# Storm Reports

Storm Reports

Report Options

Tornado

Off

Wind Damage

Off

Recorded Wind

Off

Spotter Hail

Off

Time Interval Options

30 Minutes

Off

1 Hour

Off

3 Hours

Off

6 Hours

Off

12 Hours

Off

24 Hours

Off

Use this option to see storm reports for at the most 24 hours. These reports include tornado reports, wind damage reports, recorded wind speed reports, and hail reports.

The time intervals options also allows you too see how far back you'd like to see up to 24 hours. If you'd like to search a specific date and time period, use the Storm Mapping Viewer.





# Lightning Detection

Lightning Detection

Strike Interval

1 Minute

Off

5 Minutes

Off

15 Minutes

Off

30 Minutes

On

Lightning Animation

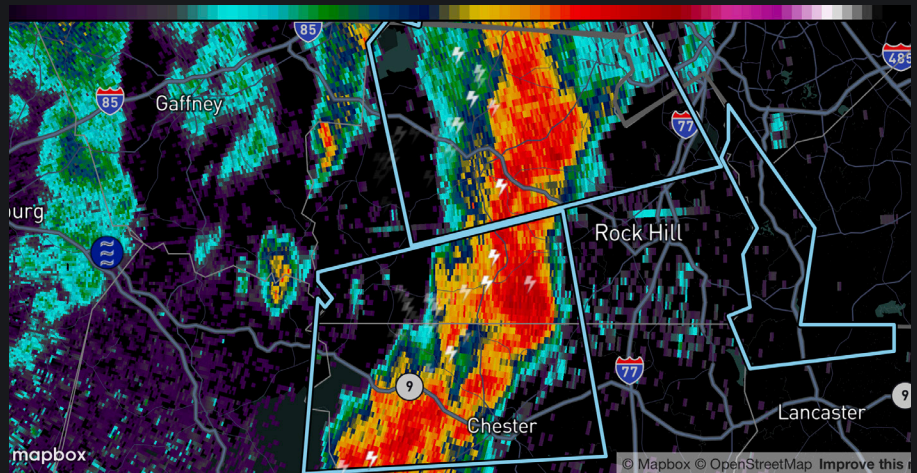
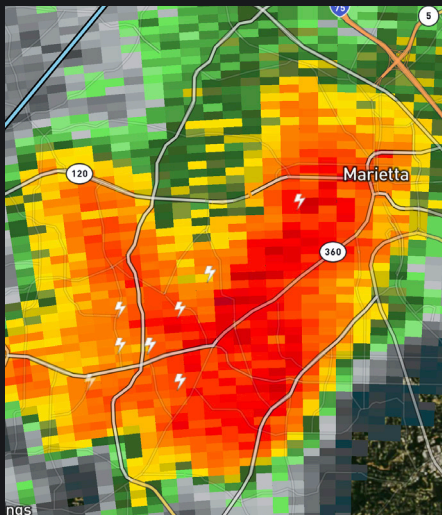
On

Lightning within the range of the selected Radar Tower is only shown.

Close

Lightning Detection is where you can see the lightning strikes for a certain time interval. More recent ones will be denoted with an opaque white strike. The more transparent they become, the more time has passed since that lightning strike.

You will only see detected lightning for the particular radar tower you have selected.



## NEXRAD History

Perhaps one of the most power tools in the restoration industry, in conjunction with the Storm Mapping Viewer. This allows you to view the radar detected hail over the last 24 hours. The NEXRAD Attribute History Setting is great to use during a suspected hail event. This tool is great to use WITH reports, because you can easily estimate the extent of the hail path. Use 1.00"+ to see the likely start to finish of a hail path, or 3.00"+ to really nail down possibilities of areas with extreme hail.

Nexrad History

Type Selection

1.00"+ Hail

Off

2.00"+ Hail

Off

3.00"+ Hail

Off

Time Interval Options

30 Minutes

Off

1 Hour

Off

3 Hours

Off

6 Hours

Off

12 Hours

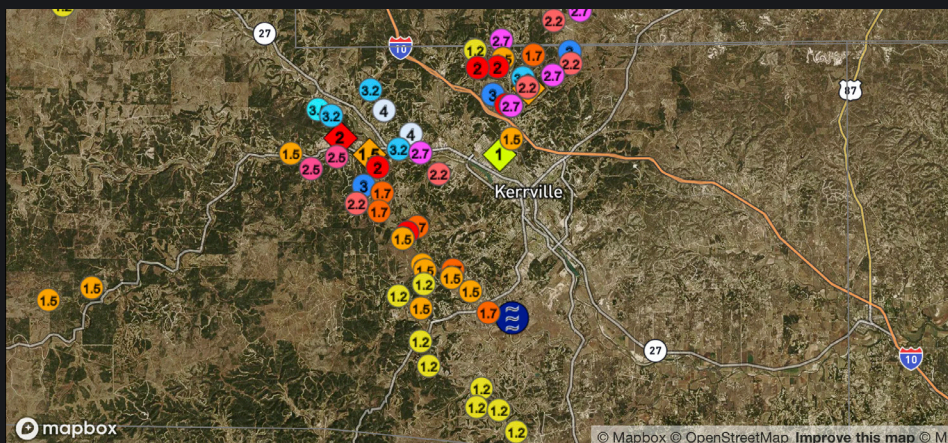
Off

24 Hours

Off

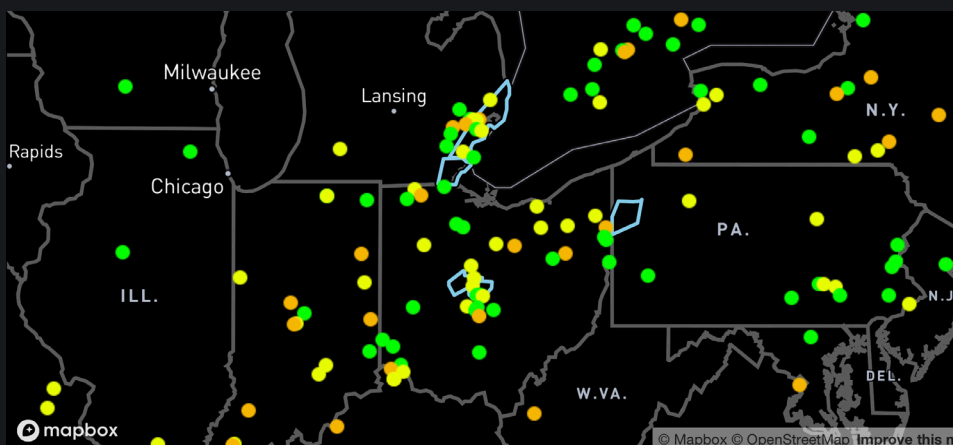
Close

\*NOTE: It is VERY important to remember this is **RADAR ESTIMATED**. Because of this, there are normal radar biases. Including, the further away from the radar the less accurate the reading is. Just because it says 4.00" does not necessarily mean this is true. Use this tool with caution.\*



## Spotter Network Settings

Here is where you can see spotters across the United States that are currently signed in to their Spotter Network account. You can do this by signing in on their website. The green dots represent active within the last 5 minutes, yellow the last 15, orange the last 30 minutes, and red is within the last 60 minutes. We're planning on adding the ability to submit location and spotter reports into the app soon!



Settings

Spotter Network Layer

On

Active Spotter Settings

Last 5 Minutes

Off

Last 15 Minutes

Off

Last 30 Minutes

On

Last 60 Minutes

Off

We are currently working on allowing Spotter Network users the ability to submit location and spotter reports.

Please look for this to be available early this summer.

Thank You,

RadarOmega Team

Close



# Display Settings

Display Settings

Map Type:  
Dark Roadmap

Opacity:  
[Slider]

Playback speed:  
[Slider]  
Fast Slow

☒ Show US States  
Adjust thickness [Slider]

☒ Show US Counties  
Adjust thickness [Slider]

US Cities & Road Network  
Show When Towers Are OFF

☒ Show TDWR Towers

☒ Show Detailed Legends

☒ Show Tower Codes

☒ Disable Map Rotation

UTC Local

Location settings

Access 5 different map

Adjust the opacity of radar/  
satellite/model imagery.

How quickly you would like the  
radar to animate

Turn states and counties off or on,  
and the ability to adjust the color and  
width of the borders!

Cities and road network can be turned  
on also with towers on or off when  
towers are removed from the map,  
or off completely.

Have TDWR Towers on

Show the detailed legends  
for each product.

Have tower icons with their tower  
identifier or off with just the gray dot.

Disables when checked and enables when  
unchecked the ability to rotate the map.

Select UTC time or local time.

Here's where you access the Location  
Settings where you can have the map  
move with your location as well as  
when you get out of radar bounds,  
it will activate to the closest tower to  
your location.

Location Settings

Move map with your location ☒

Auto-activate closest Tower ☒

Close

# Radar Settings

This is where you can turn off or on storm tracks.

Adjust the quality of the radar products (this helps older devices run smoother).

**Radar Settings** [X]

**Storm Tracks**

Initial Point	Track Line	Track Cone
<input type="checkbox"/> Off	<input type="checkbox"/> Off	<input type="checkbox"/> Off

**L2 Render Quality**

High [v]

**L3 Render Quality**

High [v]

[Product Display Settings](#)

[Radar Feed Settings](#)

[Close](#)

**Product Display Settings** [X]

**Reflectivity Gate Filter**

[20dBZ]

Use the slider above to declutter the Radar

**Reflectivity Colormap**

Default [v]

**Velocity Colormap**

Default [v]

**Velocity Unit of Measure**

Miles Per Hour (mph) [v]

[Close](#)

Changing the reflectivity gate filter allows you to have control over decluttering the radar image yourself! Typically keeping it around 20dBZ is the best practice as you will see start to see light rain reaching the ground at this point.

Here is where you can change the reflectivity or velocity colormaps.

Change the velocity units from mph, to knots, to meters per second.

**Radar Feed Settings** [X]

**RadarOmega** ☒ On

**AllisonHouse** ☐ Off

[Close](#)

Within the radar settings, this is where you can switch between the RadarOmega radar data feed, or your AllisonHouse subscription radar feed. Just enter in the key!

# Top Menu

Side Menu

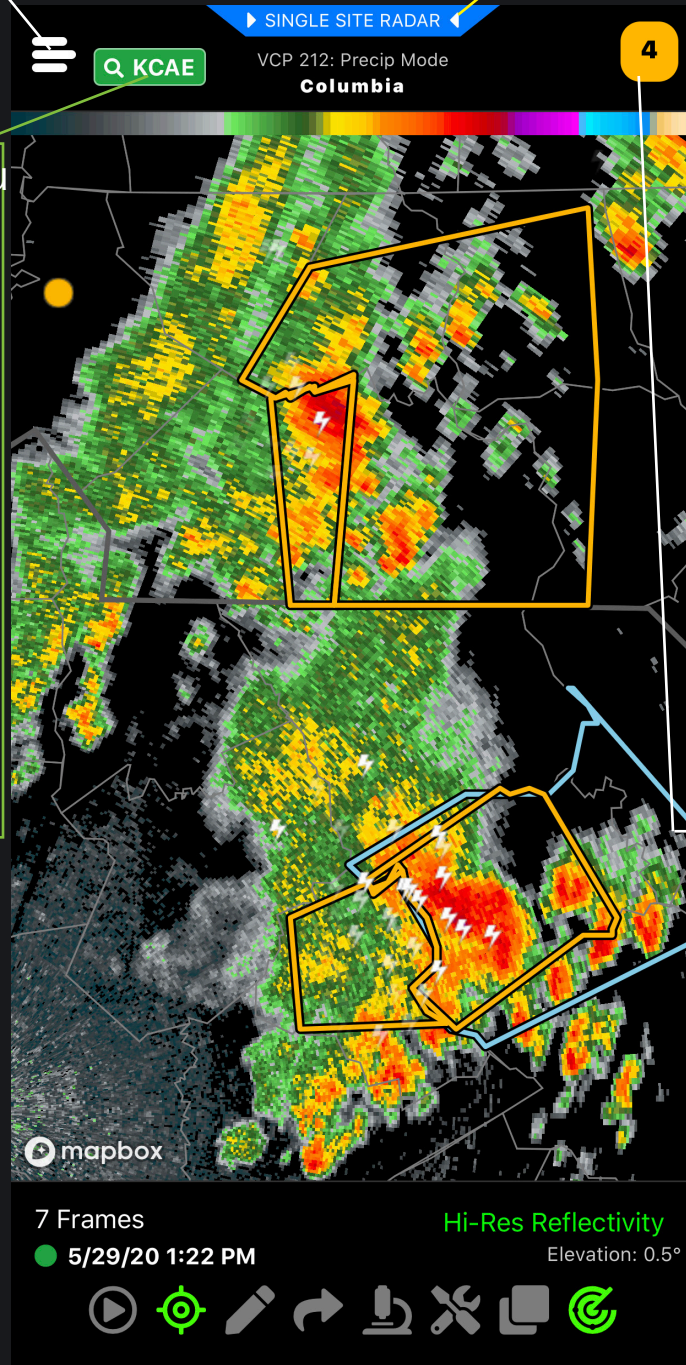
This is where you can see which radar tower you have currently selected.

Also, if you tap on this green icon, you have the ability to search for a tower this way.

Here is where you will access Single Site Radar.

If you have a subscription, this will also be where you access Satellite, HRRR, NAM3KM, NAM12KM, RAP, and MRMS.

This is where you can access the current warn-



# Bottom Menu



This is the animation button. Press once to play through the frames, and hold down the play button to access the slider option.



This will hone in on your current location. Hold this down to access location settings.



The pen tool! Use this to draw on the map. Hold down to change your pen color.



This is the sharing tool, you can do a screen recording or a screenshot from within the app.



This is the inspector tool. Use this to see a specific value on radar or models. You'll see the value in the Top Menu.



This is where you can turn on custom locations or IoT devices.



This is the last toggle in the bottom menu. When the radar icon is green it means you can see towers. When it is gray, towers will be hidden. This is also where you will toggle off and on the city and road layers.

# RadarOmega Subscriptions

This includes the three subscription packages, Alpha, Beta, and Gamma. With these we offer satellite data, models, MRMS data, and dual view display. Also included in your subscription is free access to the desktop version of RadarOmega. All you have to do is download it and log in with the information you have used to subscribe with.

Alpha	Beta	Gamma
<ul style="list-style-type: none"><li>- 250 Frames of Animation for: Single Site Radar Data, Hi-Resolution Satellite Data, Lightning Data, &amp; MRMS Data</li><li>- Model Data for: HRRR, NAM3KM, NAM12KM, &amp; RAP</li><li>- Hi-Resolution Satellite Data</li><li>- MRMS (Multi Region - Multi Sensor): Maximum Expected Hail data, Rotation Tracks data, &amp; National Reflectivity data</li><li>- Dual View Display</li></ul>	<ul style="list-style-type: none"><li>- 150 Frames of Animation for: Single Site Radar Data, Hi-Resolution Satellite Data, Lightning data, &amp; MRMS Data</li><li>- Hi-Resolution Satellite Data</li><li>- MRMS (Multi Region - Multi Sensor): Maximum Expected Hail data, Rotation Tracks data, &amp; National Reflectivity data</li><li>- Dual View Display</li></ul>	<ul style="list-style-type: none"><li>- 75 Frames of Animation for: Single Site Radar Data, Lightning Data, &amp; Hi-Resolution Satellite Data</li><li>- Hi-Resolution Satellite Data</li><li>- Dual View Display</li></ul>
<b>\$11.99 / \$119.00</b>	<b>\$8.99 / \$89.00</b>	<b>\$4.99 / \$49.00</b>
monthly / yearly	monthly / yearly	monthly / yearly

Each subscription comes with desktop access with all the features that you see above. To login to the desktop access you will have to visit this link:

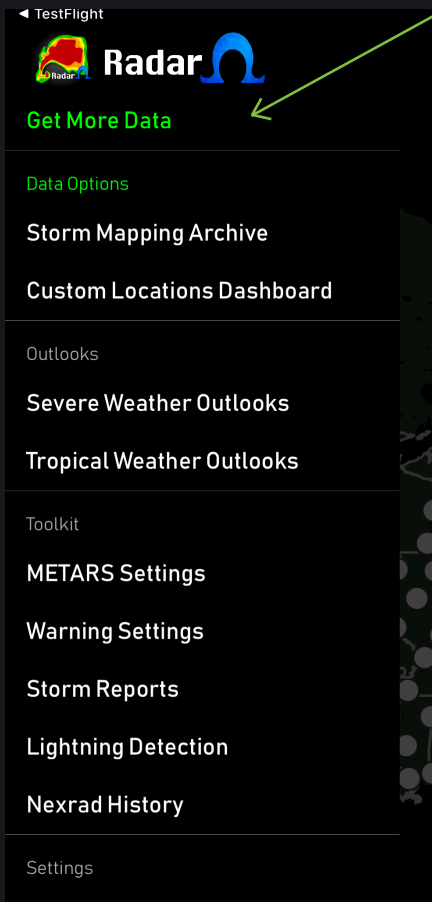
<https://www.radaromega.com/>

Select either MacOS, Windows, or Linux and you're on your way to using RadarOmega on the desktop! Enjoy!



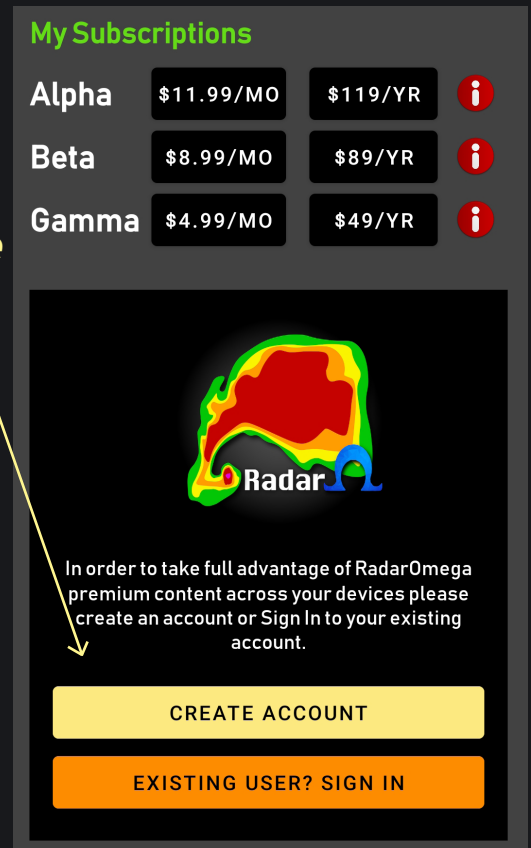
# Accessing Subscriptions

In order to access subscriptions, you will have to select the words **"Get More Data"** at the top of the side menu.



Then you will see this screen that will show you the options that you can upgrade to.

*In order to purchase a subscription, you **MUST** first create an account with RadarOmega.*



## Create Account

Complete the information below to create your RadarOmega account

Email Address

Password

Re-enter Password

CREATE ACCOUNT

Once you click the **"Create Account"** button, you'll be prompted with this short form asking you to enter in an email address and password.

This login information is what you will use to access the desktop app that is associated with the subscription level you chose!

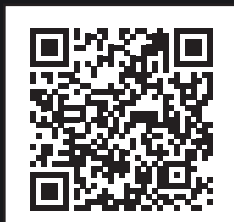


*Updated May 29, 2020*

# Thank you!

From the RadarOmega Team, to you, thank you for supporting us through this journey. We look forward to continuing to improve this app as time goes on, thanks to input from our users.

**Support QR Code**



***Need support?***

support@stormmapping.com

OR

[radaromegawx.supportbee.io/portal/sign\\_in](https://radaromegawx.supportbee.io/portal/sign_in)

***Social Media:***



@RadarOmega\_WX



@RadarOmegaApp